

Certificate ID: **99654**

Received: **11/22/21**

Scan QR Code for authenticity



Sunset Lake Enterprises

25 Brewer Parkway

South Burlington, VT 05403-7326

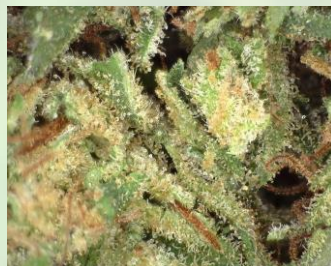
Attn: Sam Bellavance

Client Sample ID: **Special Sauce**

Lot Number: **013120211**

Matrix: **Flowers/Bud - Dry Flower**

Authorization: Chris Hudalla, Chief Science Officer	Signature: <i>Christopher Hudalla</i>	Date: 11/24/2021
--	--	---------------------



The data contained within this report was collected in accordance with the requirements of ISO/IEC17025:2017. I attest that the information contained within the report has been reviewed for accuracy and checked against the quality control requirements for each method. These results relate only to the test article listed in this report. Reports may not be reproduced except in their entirety.

TP: Terpenes Profile [WI-10-08]

Analyst: AC

Test Date: 11/23/2021

Client sample analysis was performed using full evaporative technique (FET) headspace sample delivery and gas chromatographic (GC) compound separation. A combination of flame ionization detection (FID) and/or mass spectrometric (MS) detection with mass spectral confirmation against the National Institute of Standards and Technology (NIST) Mass Spectral Database, Revision 2017 were used. Chromatographic and/or mass spectral data were processed by quantitatively comparing the analytical peak areas against calibration curves prepared from certified reference standards.

99654-TP

Compound	CAS	Conc. (wt%)	Conc. (ppm)	Qualitative Profile	
alpha-pinene	80-56-8	0.172	1,720	[Red bar]	
camphene	79-92-5	0.0056	55.7	[Orange bar]	
myrcene	123-36-3	0.938	9,380	[Orange bar]	
beta-pinene	127-91-3	0.0860	860	[Yellow bar]	
3-carene	13466-78-9	0.0008	8.02	[Yellow bar]	
alpha-terpinene	99-86-5	0.0005	5.47	[Yellow bar]	
Ocimene-1	-	0.0012	12.2	[Yellow bar]	
limonene	138-86-3	0.0970	970	[Green bar]	
p-cymene	99-87-6	ND	ND	[Green bar]	
Ocimene-2	-	0.0375	375	[Green bar]	
eucalyptol*	470-82-6	<RL	<RL	[Green bar]	
gamma-terpinene	99-85-4	0.0009	9.00	[Cyan bar]	
terpinolene	586-62-9	0.0080	79.5	[Cyan bar]	
linalool	78-70-6	0.0332	332	[Cyan bar]	
isopulegol	89-79-2	<RL	<RL	[Cyan bar]	
geraniol	106-24-1	ND	ND	[Cyan bar]	
beta-caryophyllene	87-44-5	0.176	1,760	[Blue bar]	
humulene	6753-98-6	0.0661	661	[Blue bar]	
caryophyllene oxide	1139-30-6	0.0050	50.0	[Blue bar]	

wt%	0.00	0.50	1.00
-----	------	------	------

Total Terpene: 1.6 wt%

* Certified reference standard not available for this compound. Concentration is estimated using the response factor from alpha-pinene. ND = None Detected. RL = Reporting Limit of 5 ppm.

END OF REPORT